

## Areas of Improvement



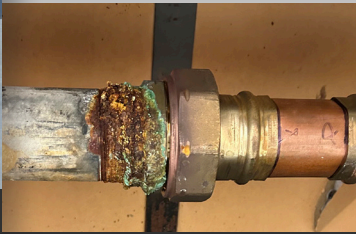
Air Conditioning Units



Electrical Boxes



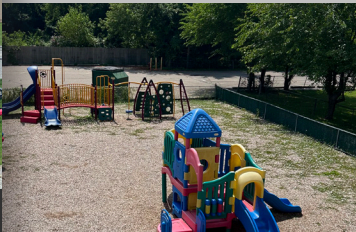
Sea-Clamps Holding Exhaust Fan



Boiler Lines



Grandview Playground



Botsford Playground

## Pilot Classroom Examples



## THREE WAYS TO LEARN MORE

- 1 **SCAN** the QR code
- 2 **VISIT** our bond page at [clarenceville.k12.mi.us/district/2025-bond-information](http://clarenceville.k12.mi.us/district/2025-bond-information)
- 3 **CONTACT** Superintendent Melissa Carruth at [melissa.carruth@clarencevilleschools.org](mailto:melissa.carruth@clarencevilleschools.org)

## Important Voting Information

**September 25**

Absentee ballots sent out no later than 40 days prior to election day.

**October 20**

Last day to register to vote by mail or online 15 days prior to election day.

**November 4**

Register to vote at the clerk's office up to 8 p.m. on election day.

Paid for by Clarenceville School District, 20210 Middlebelt Rd., Livonia, MI 48152



## November 2025 School Ballot Propositions

Non-Homestead Operating Millage & Net-Tax-Rate-Decrease Bond

From the prior levy

**FUNDING THE FUTURE**



**VOTE TUESDAY, NOVEMBER 4**



Proposition 1

# Non-Homestead Operating Millage Renewal

The proposed 2025 operating millage renewal, that generates \$3.2 million annually, supports Clarenceville School District's efforts to maintain staffing, provide instructional and extracurricular programming opportunities, and fund maintenance and operations.

Pays for:



Teacher & Staff Salaries



Instructional & Extracurricular Programs



Maintenance & Operations

Learn more!

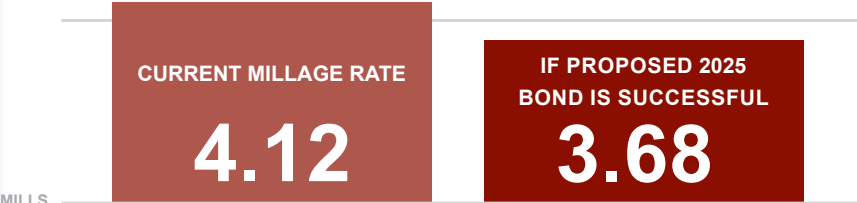


# Funding the Future.

Clarenceville School District has proudly served generations of learners—but our facilities haven't seen major investment in over 30 years. This bond proposition offers an opportunity to bring our buildings up to today's standards, creating safe, modern, and inspiring spaces that reflect the high expectations we hold for our students and staff. With a 0.4478 net decrease to the current millage rate from the prior levy, the bond supports the district's continued commitment to educational excellence and long-term sustainability.

Net-Tax-Rate **DECREASE**  
From the prior levy

**\$29.25 MILLION BOND**



Proposition 2

# Net-Tax-Rate- Decrease Bond

From the prior levy

To create a learning environment where students can thrive, the \$29.25 million bond proposition will include HVAC, electrical, and interior improvements, a new high school gym, and district-wide furniture and equipment.



**Elementary School Modernization**

Upgrades to Botsford and Grandview, including site work, HVAC, electrical, playground improvements, and exterior and interior improvements, including STEM labs.



**Secondary Campus Enhancements**

A new gymnasium, site work, HVAC, electrical, interior and exterior improvements, and auditorium upgrades at Clarenceville High School.



**District-Wide Improvements**

Upgrades to safety and security—including secure vestibules and entrances—along with modern technology, furniture, and equipment designed to support 21st-century learning environments.



**Strategic Facility Planning**

Use of the current middle school as a swing space during renovations, with future plans to be determined.

**VOTE TUESDAY, NOVEMBER 4**

For more information, visit [clarenceville.k12.mi.us/district/2025-bond-information](http://clarenceville.k12.mi.us/district/2025-bond-information)

